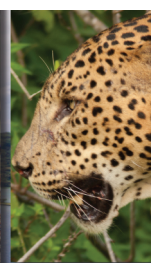
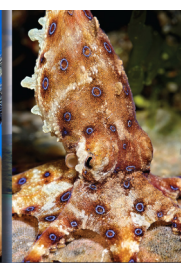


KNOW BEFORE YOU GO

RIVER CRUISES · WORLDWIDE LIVEBOARDS · THRILLING SAFARIS



Aggressor Safari Lodge Sri Lanka

Dolphin Scuba Reservations Office

Office Hours

1530 El Camino Ave Sacramento, CA 95815

Monday-Friday: 9 am – 7 pm

Saturday: 9 am – 4 pm

Office (USA): 800-436-5744 +1-916.929.8188

randy.haight@dolphinscuba.com www.dolphinscuba.com

Emergency/Delay in Travel – After Hours 7 Days a Week

+1-916.929.8188

QUICK REFERENCE – AIRPORT, HOST HOTEL, TRANSFERS

Recommended Arrival/Departure - Bandaranaike International Airport, colloquially known as Katunayake Airport and Colombo International Airport (CMB), is the main international airport serving Sri Lanka.

It is recommended for guests to arrive the day before check-in into the Aggressor Safari Lodge and stay at the host hotel, Jetwing Beach Hotel in Negombo. Transportation from the airport to the host hotel is not included but can be arranged for you. The pick up time from the Jetwing Beach Hotel is at 8:00 am and a 2 ½ hour trip to the safari lodge. On the last day of your trip, check out is at 11 am. Guests will enjoy a leisure breakfast before departing back to the Jetwing Beach Hotel in Negombo or the Colombo International Airport. For airline, hotel and airport transfers, please contact Dolphin Scuba at randy.haight@dolphinscuba.com.

AIRLINE CHECKED BAGS: Check with your airline or airlines (if traveling with more than one carrier) regarding luggage allowances, limitations and overage fees. Some airlines have seasonal restrictions to certain destinations that may limit guests to one checked bag or a maximum weight of all checked bags and prohibit extra pieces or over weight pieces.

SRI LANKA SAFARI LODGE INCLUDES:

All private luxury chalet tents are air-conditioned, have memory foam mattresses, private bathrooms with a bathtub/shower, hair dryer, shampoo, conditioner, robes, and a safe to lock your valuables. The lodge has plenty of hot and cold water with very good water pressure. Meals are included with breakfast (cooked to order), picnic lunches and an elegant dinner with tableside service. Beverages (alcoholic and non-alcoholic) are complimentary while staying at the lodge. Linens are changed daily (upon request) and fresh towels are placed in each chalet as needed.

THE LODGE

The Aggressor Safari Lodge is located on a spacious 6-acre property and 20 minutes from the Wilpattu National Park. The lodge has a main reception, dining tent, entertainment area with a 54 inch TV, 8-luxury private tented chalets, large swimming pool and beautiful grounds with animal life. The luxury-dining tent, is located at the rear of the outdoor reception and bar area and is called the Aliya Bush Restaurant (local for elephant). The Reception Bar is called the Diviya Bar (local for leopard) and the Pool Deck Bar is called the Wallas Walla Bar (Bear Watering Hole).

The beautiful property is located on the Kala Oya River, which is the 3rd longest river in Sri Lanka and borders Wilpattu National Park on the other side giving the river view tents direct views of the park. (Swimming is not permitted in Kala Oya River due to local Wilpattu park mugger crocodiles and drifting jungle debris)

POWER

The standard voltage is 240 volt and the standard frequency is 50 Hz. In each tented chalet, guests will have floor-mounted units for electronic equipment such as cell phones, computers or tablets, cameras, etc. Be sure you check the label on your appliances; you might need a converter if the frequency used in your country is different. Additional extension cords and additional plug-ins are available if needed.

ITINERARY SAMPLE

For itinerary details, please view the website; www.dolphinscuba.com.

WELCOME

As you prepare for your safari adventure at the Aggressor Safari Lodge, it is important to notify our office of last minute changes concerning your airline arrival and departure times or any changes in your contact information. Aggressor Adventures Reservations Office and the Aggressor Safari Lodge are in constant communication. In the event of an emergency, family and friends may contact you at the above numbers at the lodge.

We recommend you pack a change of clothes, medication and toiletries in your carry on bag. Having these few items with you can make an unexpected luggage delay more bearable.

PASSPORTS & DOCUMENTATION

Visitors must have a current passport, adequate funds to support themselves, and a return airline ticket to travel to Sri Lanka. US citizens require a passport that must be valid for 6 months from date of entry. It is the travelers' responsibility to ensure they have the proper documentation to travel into each country on his or her itinerary as well as for re-entry and return to their country. Please check with the appropriate consulate to ensure you have the proper documentation. Always check your passport and visa requirements. The e-visa can be completed online and is good for a 30-day stay in Sri Lanka. Most airlines require seeing the printed and approved ETA at check in prior to traveling to Sri Lanka. Following is the link: <https://eta.gov.lk/etaslvisa/etaNavServ>

US citizens may go to the US Department of State website at www.travel.state.gov for more information. The website also has information for consulates by country to assist with requirements. There are special requirements for children leaving the US and many countries have adopted requirements for the protection of children. Since regulations vary by country, contact your consulate or embassy of your country for the requirement. ***The Reservation Office and Staff cannot assume responsibility for passengers not having correct documentation.***

GUEST INFORMATION SYSTEM (GIS)

The Reservations Office and the Aggressor Safari Lodge require each guest to complete an Application through the GIS (Guest Information System). The GIS allows guests to interactively complete all required paperwork that includes special requests and travel information. If you haven't received a link to access the GIS, please contact an Aggressor agent. Guests who fail to complete the GIS prior to transferring to the lodge, will be denied check-in.

INSURANCE

We strongly recommend each guest purchase comprehensive accident, medical, baggage and trip cancellation and interruption insurance when space is reserved. Trip insurance will protect you from financial disappointment if you are prevented from making your scheduled trip due to illness or in the event that unforeseen circumstances occur. In the event you cancel your trip prior, be familiar with the cancellation policies, which can be found www.dolphinscuba.com

FEES & TAXES

Your daily Jeep Safari's and access to Wilpattu or Minneriya National Park are inclusive of your package at the Aggressor Safari Lodge, however, each guest must pay the following World Heritage entrance fees:

Climbing Sigriya Rock & Museum: \$30 Anuradhapura Heritage Site: \$20 Monkey Primate Center: \$25

**Note that all fees will be billed to the guest at the end of their stay and are payable by USD, Visa, MasterCard, and Sri Lanka Rupees.*

HEALTH

The Aggressor Safari Lodge has a comprehensive first aid kit. Aggressor Safari Lodge staff are unable to accept any medication for safekeeping including those that require refrigeration. Should a guest have a medication requiring temperature control, they will need to travel with a travel cooling case or small storage cooler with several blue ice packets. The staff will be happy to store and recharge the blue ice but are unable to accept possession or responsibility for the proper care and storage of medication. This should be kept in your tent. There is **NO smoking is allowed inside the tents or on the veranda deck.**

COMMUNICATIONS

Internet and telephone signals are available, although they can be intermittent due to the remote location of the lodge.

CUISINE

The Aggressor Safari Lodge offers a variety of Sri Lankan feasts and local cuisine. Guests will wake up to fresh fruits, cereals, juices and hot entrees. Coffee and a continental breakfast is available at 5 am every morning. Lunches are normally picnics packed for the safari or if served at the lodge, features hot soups, homemade breads, salads and sandwiches and/or entrees. Dinners are served at the lodge each evening for a sit down dinner at 7:30 pm and prepared by our Sri Lankan chef and will include salads, vegetables, seafood, beef or chicken with a fresh homemade dessert. Certain special dietary and beverage requests may not be available due to the remote nature of this location so we highly recommend you bring these items with you.

BEVERAGES

A signature amenity of Aggressor is daily in-room morning wake up beverage service with coffee, tea or hot chocolate. A complimentary bar service is provided with non-carbonated beverages, soft drinks, local beer and wine. Feel free to help yourself any time you need a little thirst quenching. Drinking alcohol and safari tours do not mix especially since it may contribute to dehydration which can cause heat injuries. Please be a responsible guest and drink or safari.

WHAT TO WEAR & BRING

Safari: It is suggested to travel light; Sri Lanka is hot and humid so for your safari adventure clothing it should be lightweight, comfortable sportswear and a comfortable pair of walking shoes. A light sweater or jacket is ideal for evenings. For the months of November to February, a lightweight raincoat is recommended. Dress is always casual and informal. Additional items you may want to bring are sunscreen, sunglasses, hat and binoculars.

World Heritage Sites: Shoulders and knees must be covered before entering World Heritage Sites. Every visitor must remove shoes and hats before entering temples.

CELEBRATE YOU

Whether it's your anniversary, birthday, honeymoon, wedding or you are celebrating some other special occasion, please let us know so we can celebrate your occasion. Kindly advise the US office prior to traveling so the lodge staff is notified in advance.

For nightly entertainment guests may take a night safari walk, go star gazing, attend an animal identification presentation, watch a DVD movie or just relax, The entertainment center in the main tent is there for you to enjoy. You will find a selection of movies to watch on the large screen.

WEATHER CONDITIONS

Sri Lanka's position close to the Equator means that temperatures remain fairly constant year-round. Coastal and lowland areas enjoy average daytime temperatures of around 26–30°C and 78-86°F. Sri Lanka is unusual as it has two monsoon periods, with the wettest periods being December and January in the North. Humidity is high everywhere throughout the island.

RENTAL - Digital Photo Equipment

	<u>Daily</u>	<u>4 Days</u>
Olympus TG3 Digital Camera	\$30	\$90
Go Pro		
Binoculars	\$25	\$75

*Note: All prices are subject to change without notice and items should be reserved prior to traveling.

SAFARI LODGE ADVENTURE

The Video Professional can capture your Jeep Safari Adventure to share with family and friends. The video of the trip (includes all guests and staff) is \$35 US. Please inquire upon arrival if this will be available for your stay.

LODGE BOUTIQUE & CREDIT CARDS

There is a mini-boutique at the Aggressor Safari Lodge with assorted t-shirts, and miscellaneous items. All Safari Lodge Furniture & Interior decoration is locally made and also available for sale and shipping worldwide. The Aggressor Safari Lodge accepts cash, traveler's checks, Visa and Mastercard; no personal checks. We will charge you for all your purchases on the last day of your safari adventure before leaving for Colombo. After returning home if you still want boutique items, please visit the Aggressor online boutique at www.dolphinscuba.com.

GRATUITIES

Staff gratuities are not included in the Aggressor Safari Lodge rates. We believe gratuities should be voluntary and based upon the quality of service the staff has provided. When settling your account, the lodge will have an envelope for gratuities that will be divided equally among the staff. Payment can be made by cash, Visa or Mastercard.

CHECK OUT

Everything is "free" until the last day of your vacation. The lodge simply runs a tab for you that includes everything you purchased as well as any rental equipment and miscellaneous items. Check-out is done during the morning of the last day of your visit.

The Sri Lanka Aggressor Safari Lodge accepts Visa, MasterCard, USD, Sri Lanka Rupees and no personal checks. Please be aware that many credit card companies are charging a conversion fee for foreign currency charges. This is a fee imposed by your credit card company and not the lodge.

LODGE REPORT

Each week we post the Lodge log of the previous weeks safari adventures. Please feel free to visit www.dolphinscuba.com and go to the Lodge log and their facebook page to find out weather conditions and animal sightings.

Dolphin Scuba Reservations Office

Office Hours

1530 El Camino Ave Sacramento, CA 95815

Monday-Friday: 9 am – 7 pm

Saturday: 9 am – 4 pm

Office (USA): 800-436-5744 +1-916.929.8188

randy.haight@dolphinscuba.com www.dolphinscuba.com

Emergency/Delay in Travel – After Hours 7 Days a Week

+1-916.929.8188